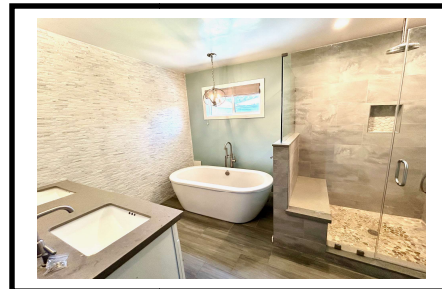
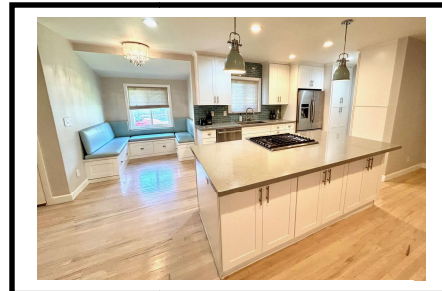
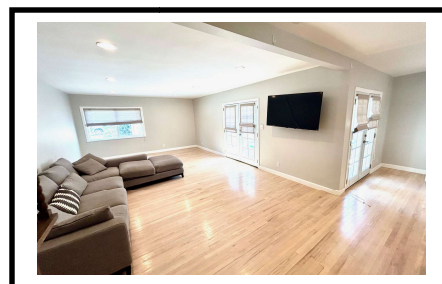


**5140 Purdue Avenue
Culver City, CA 90230**

Offered at \$1,575,000



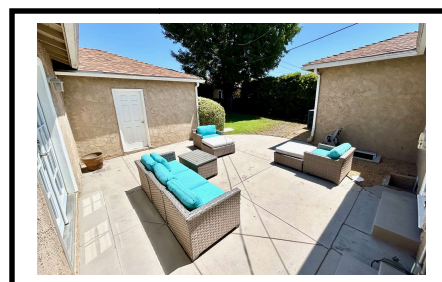
Remodeled and Updated Single Family Home on a wonderful corner lot in a very desirable Culver City neighborhood. Showing light and bright with an open floor plan and a private entertainer's backyard. The spacious kitchen with stainless appliances, newer self closing cabinets and a large island create an inviting environment for the chef in your family. The built-in breakfast nook offers an intimate and comfortable dining option. The primary suite has an en suite "spa-like" bathroom featuring a step-in shower with built in bench seating, multiple shower heads and a frameless glass enclosure. This special space also features a freestanding soaking tub and a double sink vanity. The other two bedrooms are generously sized and share a beautifully appointed and updated full bathroom. Move in ready condition! The home is conveniently located near top rated schools, LAX, beaches, shopping, eateries, vibrant downtown Culver City, Sony Studios, the Ballona Creek bike trail, Playa Vista Village, Silicon Beach, Marina del Rey, trendy Venice Beach and so much more.



Quick Facts

- 3 Bedrooms 2 Bathrooms
- 1,636 square feet of living space
- Year Built: 1953
- 5,447 Sq. Ft. Corner Lot

Additional Information



Call Tom at 818-915-3360 to Schedule a Private Showing!



Bregman Properties

"Experience the Difference"

Tom Bregman - Broker / Realtor®

Direct: (818) 915-3360

Email: Tom@BregmanProperties.com

**Additional Information and Pictures:
www.BregmanProperties.com**

**Find Your New House:
www.FindMyNewHouse.com**

**Find Out What Your House is Worth:
www.SoCalHouseValue.com**